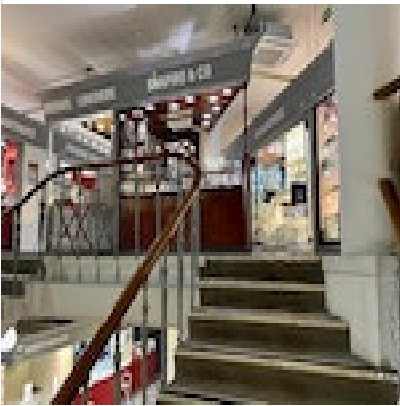


Lilly's Attic



Ruby Sapphire Lion Ring in 18ct Gold dated London 1970, Lilly's Attic since 2001
£988.00

Q: What a lion symbolises?

A: The lion is a common charge in heraldry. It traditionally symbolises courage, nobility, royalty, strength, stateliness and valour, because historically the lion has been regarded as the "king of animals".

Origin	British
Period	1970s