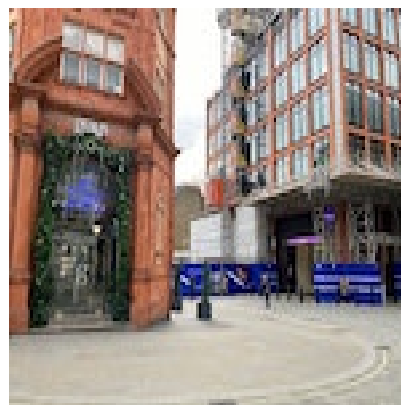
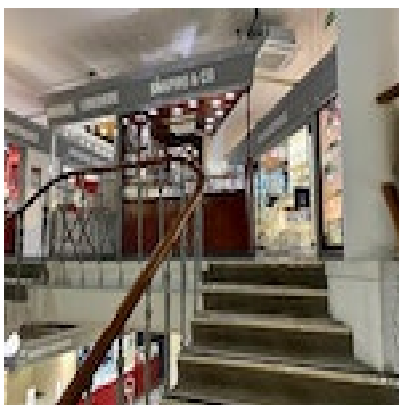


SHAPIRO & Co  
since 1979





**Diamond Ring in 18ct White Gold date circa 1990, SHAPIRO & Co  
since 1979  
£2,750.00**

Q: When were emerald cut diamonds popular?

A: 1920's

A: The emerald cut diamond first appeared during the 1500's, yet saw a rise in popularity during the Art Deco era of the 1920's and 1930's. However, during the 1970's the emerald cut diamond also reached another apex and the clean lines appeared in mid-century modern engagement rings.

**Period**

1990s