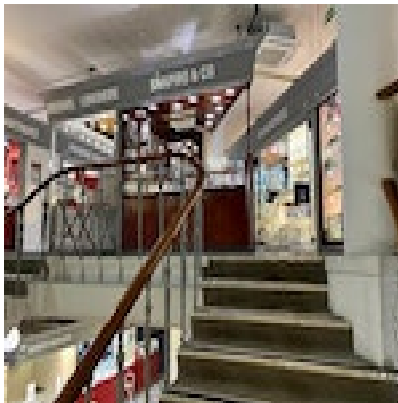




SHAPIRO & Co
since 1979



Rubellite Tourmaline Diamond Ring in 18ct White Gold date circa 1980, SHAPIRO & Co since 1979

£2,750.00

Q: What is the history of Rubellite ?

A: Just as with other Tourmaline varieties, there is a historical propensity for Rubellite to be confused with Ruby or even Sapphire. 'Ruby' jewellery reportedly commissioned by Peter the Great (1672-1725) for the Russian Imperial Court were later discovered to be Rubellite.

Period	1980s
Style	Vintage
Condition	Excellent
Materials	Gold
Main Gemstone	Tourmaline
Main Gemstone Cut	Faceted Cut
Ring Size	N½
Carat for Gold	18 K
Main Gemstone Carat	2.70ct approximately

Secondary Gemstone	Diamond
Secondary Gemstone Carat	Total Weight: 0.21ct approximately
Secondary Gemstone Cut	Brilliant Cut

Antique ref: SHAPIRO & Co