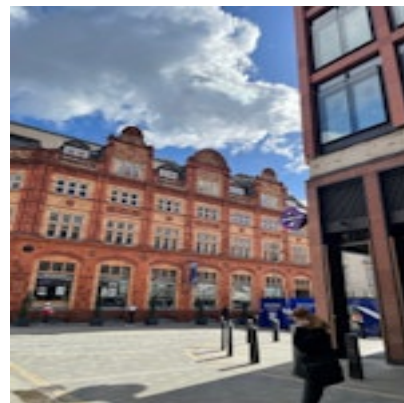
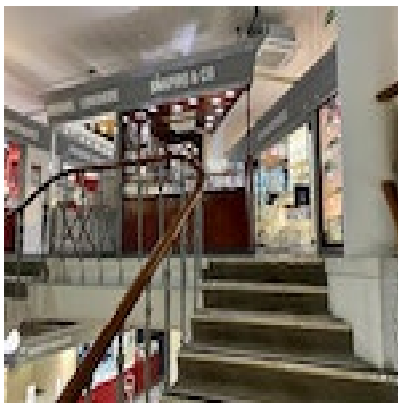


SHAPIRO & Co
since 1979



Pink Sapphire Line Bracelet in 18ct White Gold date circa 1980, SHAPIRO & Co since 1979

£5,750.00

As early as 300 BC different gemstones, including diamonds, were studded into bangles for design accents, and diamond bangles remain a popular style trend today. First known as diamond line bracelets when they appeared in the 1920s, these simple but richly elegant bracelets became more popular in the 1970s.

Period	1980s
Condition	Excellent
Materials	Gold
Main Gemstone	Pink Sapphire
Main Gemstone Cut	Faceted Cut
Carat for Gold	18 K
Main Gemstone Carat	Total Weight: 6.60ct approximately
Dimensions	Length: 19cm / 7.48inch

Antique ref: SHAPIRO & Co