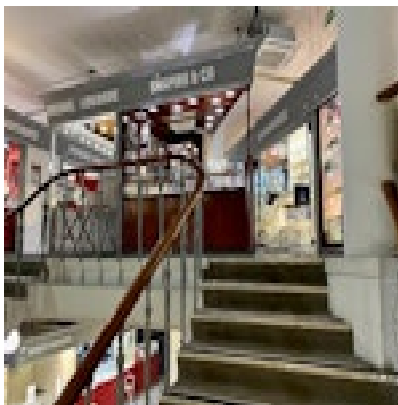


SHAPIRO & Co  
since 1979



**South Sea Pearl Necklace with 18ct White Gold Clasp date circa 1980, SHAPIRO & Co since 1979**

**£8,750.00**

- Clasp is French

The first commercial pearl culturing farm began in Western Australia in 1956. Australia now produces about 60 percent of the world's South Sea cultured pearls. Japanese companies began culturing South Sea pearls in Indonesian in 1970. The Philippine South Sea culturing effort also began in the 1970s.

<b>Origin</b>	French
<b>Period</b>	1980s
<b>Condition</b>	Excellent
<b>Materials</b>	Gold
<b>Main Gemstone</b>	Pearl
<b>Carat for Gold</b>	18 K
<b>Main Gemstone Carat</b>	Total Weight: 0.60ct approximately
<b>Dimensions</b>	Length of Necklace: 19inch/48.26cm
<b>Diameter</b>	Pearls size: 15.3-16mm
<b>Secondary Gemstone</b>	Diamond

Antique ref: SHAPIRO & Co