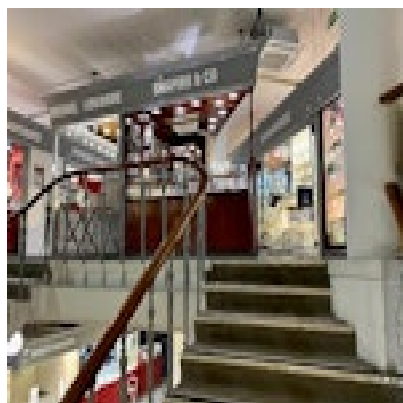


SHAPIRO & Co
since 1979



**18ct Gold Earrings date London 1963, SHAPIRO & Co since 1979
£1,275.00**

Earrings Styles in 1960's

Pierced ears were more acceptable and that lead to bigger and heavier earrings being worn. Rhinestone and paste earrings in clusters and drop styles were very popular, as were domed button earrings featuring plastics, fabrics and sequins.

Period	1960s
Condition	Excellent
Materials	Gold
Carat for Gold	18 K
Hallmark	London 1963
Dimensions	Total Weight: 3.6gm

Antique ref: SHAPIRO & Co