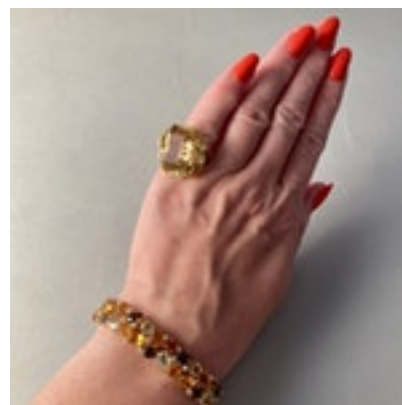
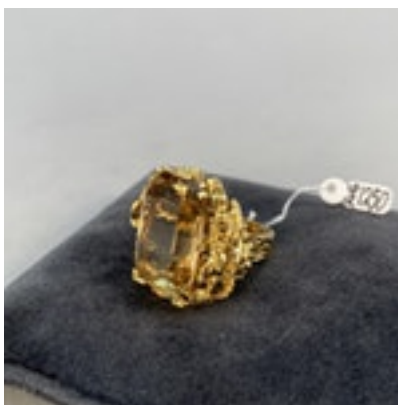
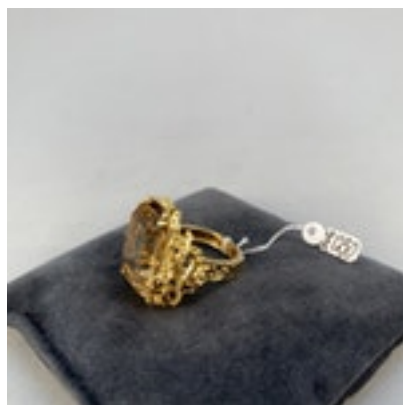
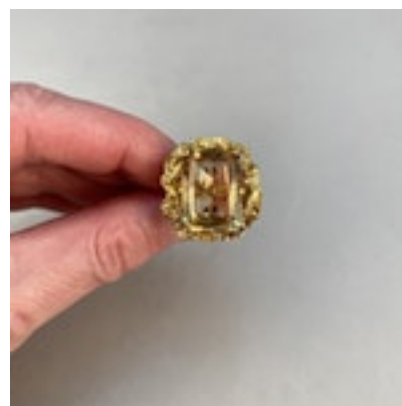
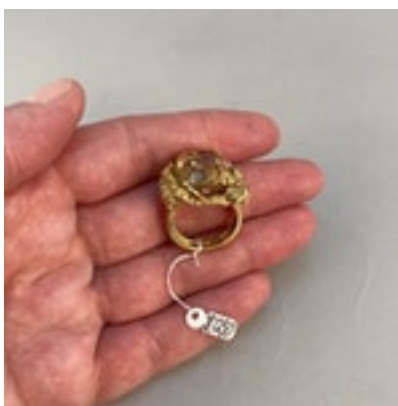
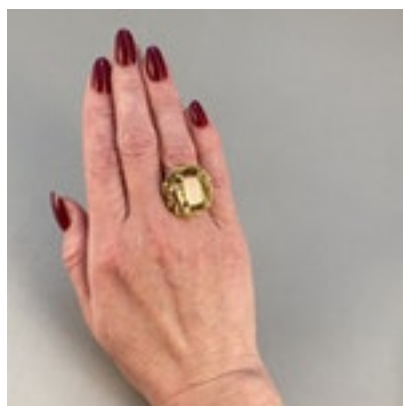


**SHAPIRO & Co**  
Since 1979



**1960's, 18ct Yellow Gold Citrine stone set Ring, SHAPIRO & Co since 1979**

**£1,250.00**

-Citrine: 8ct approximately

Q: Who designed this Ring ?

A: Ring is unsigned, but in the style of John Donald of London in our opinion.

|                                |                   |
|--------------------------------|-------------------|
| <b>Period</b>                  | 1960s             |
| <b>Condition</b>               | Excellent         |
| <b>Materials</b>               | Gold              |
| <b>Main Gemstone</b>           | Citrine           |
| <b>Carat for Gold</b>          | 18 K              |
| <b>Main Gemstone<br/>Carat</b> | 8ct approximately |

Antique ref: SHAP-Grays 67