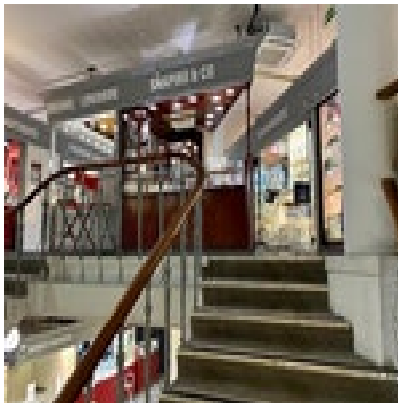


SHAPIRO & Co
since 1979



**Tourmaline Diamond Bracelet in 18ct White Gold date circa 1970,
SHAPIRO & Co since 1979
£4,250.00**

Q: Where did Tourmaline first come from ?

A: In the 1500s, a Spanish conquistador found green tourmaline in Brazil—which he mistook for emerald. His error held until the 1800s, when mineralogists finally identified tourmaline as its own mineral species.

Period	1970s
Condition	Excellent
Materials	White Gold
Main Gemstone	Tourmaline

Main Gemstone Cut	Asscher cut
Carat for Gold	18 K
Main Gemstone Carat	5.18ct approximately
Dimensions	Length: 7.12inch/18.1cm
Diameter	Weight: 29gm
Secondary Gemstone	Diamond
Secondary Gemstone Carat	3.50ct approximately
Secondary Gemstone Cut	Brilliant Cut

Antique ref: SHAPIRO & Co